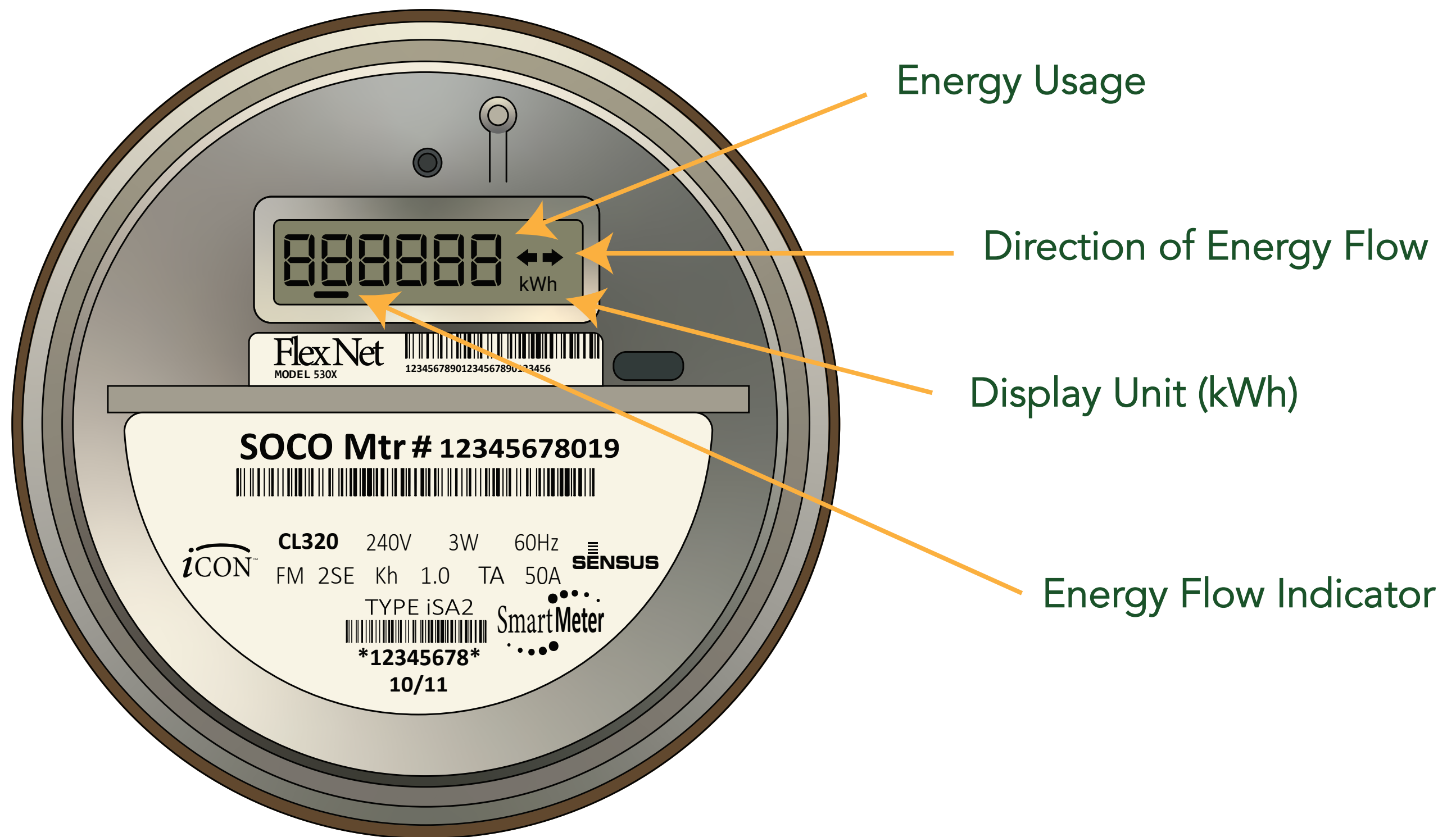




SUNFARM ENERGY SOLAR FRIDAY

HOW TO READ YOUR METER



Let's start with some meter reading basics.

In a traditional home, your meter records your electricity usage in kilowatt-hours (kWh) and shows how much energy you have purchased from the grid.

However, when you have solar, your meter is reprogrammed for bi-directional energy flow in order to record the amount of energy that is returned to the grid.



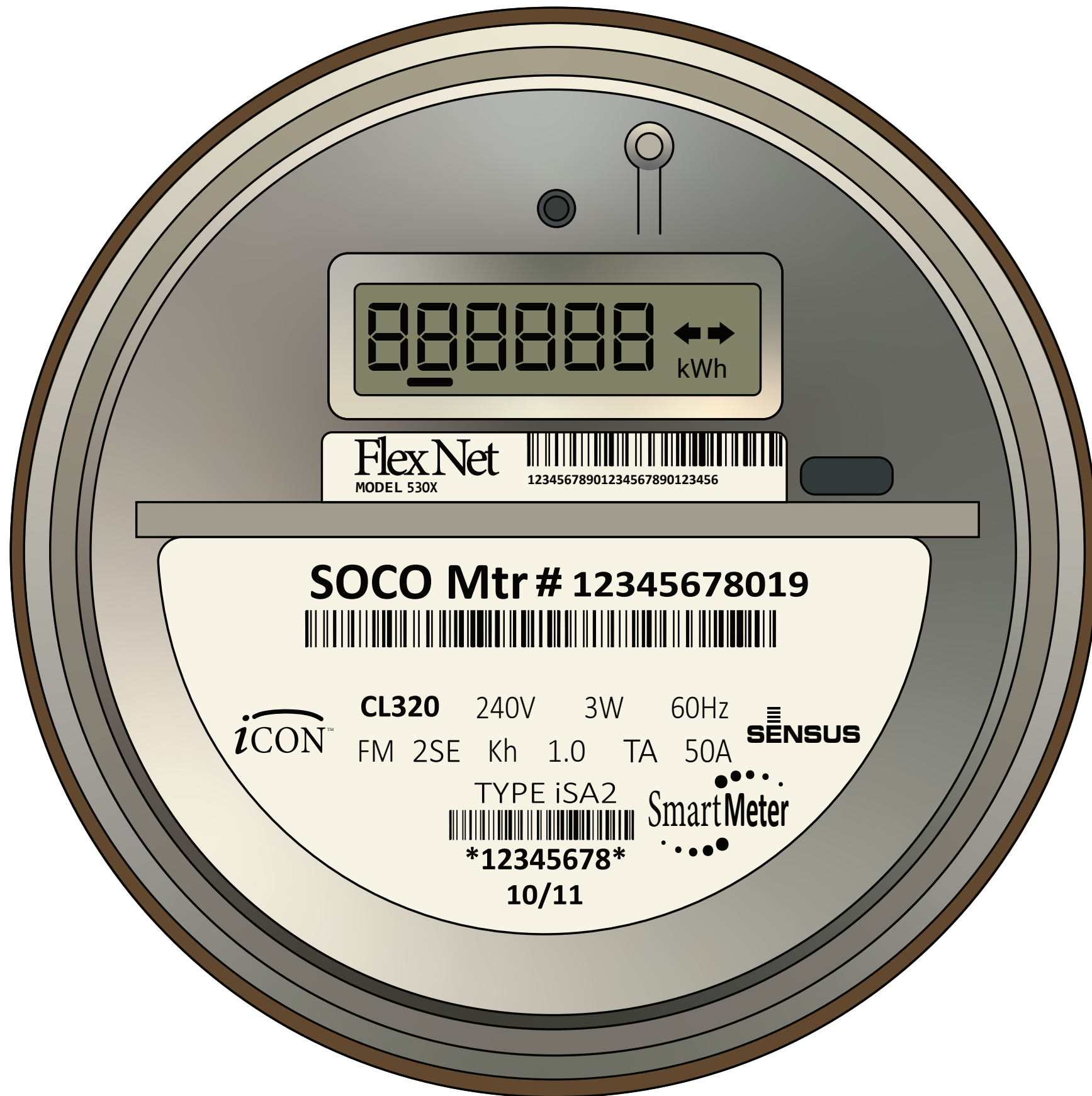
You will also notice that your direction of energy flow is now enabled to show a left facing arrow.

This means you're now ready to export energy back onto the grid.

I just had solar installed. How do I know if my meter has been reprogrammed?

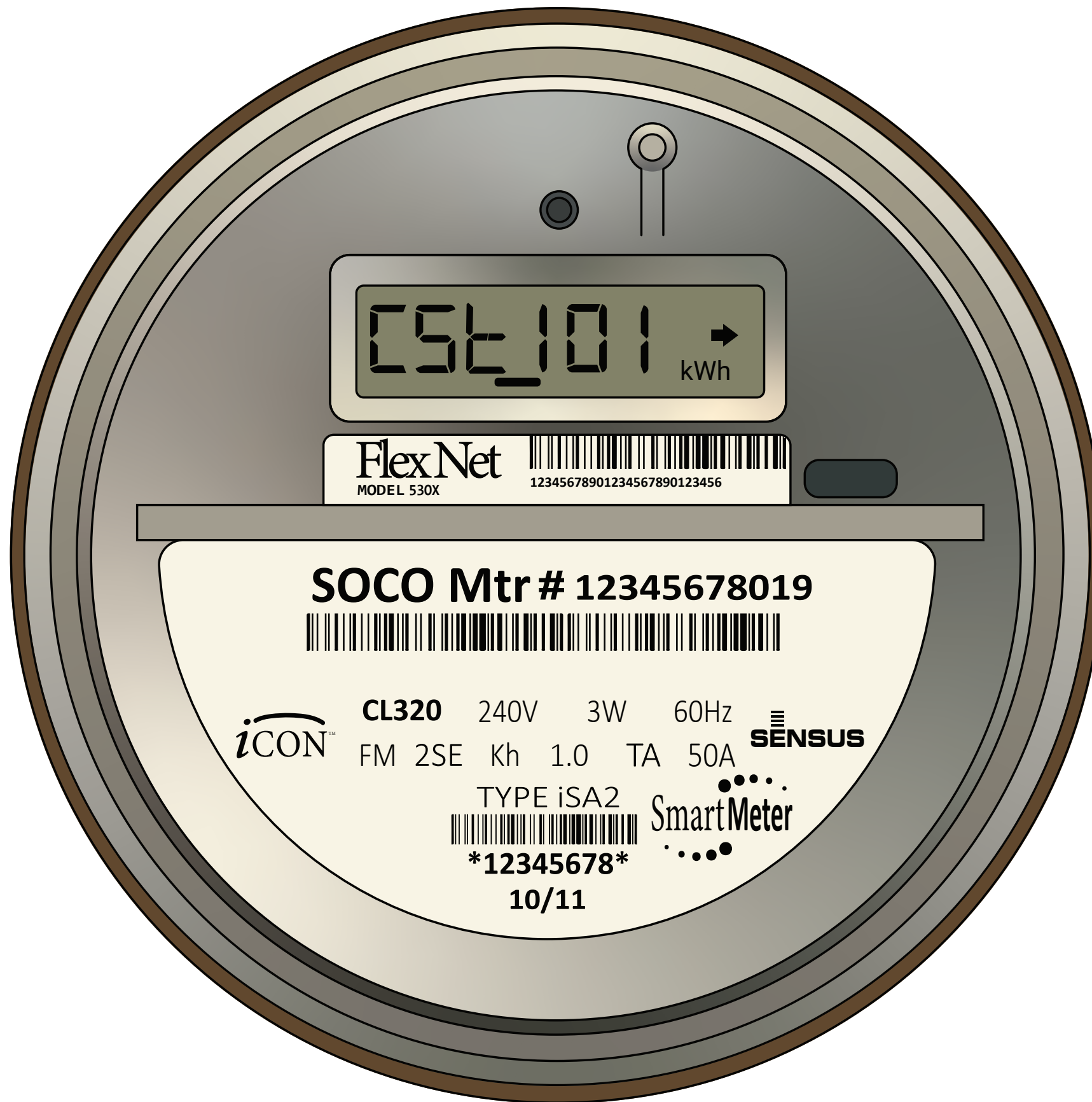
The only way to know if your meter has been reprogrammed is to look for the reading CSt 201 on your meter screen.

This reading means your meter has been reprogrammed for bi-directional energy flow.



SEGMENT TEST SCREEN

This screen displays all the LED lights at once to make sure the meter is working properly.



CSt 101

This screen indicates that the next display will show the amount of energy received / purchased from the grid.

→ Right Arrow = Received / Purchased



CSt 201

This screen indicates that the next display will show the amount of energy send back / sold to the grid.

← Left Arrow = Sent Back / Sold

What do the different screens mean?

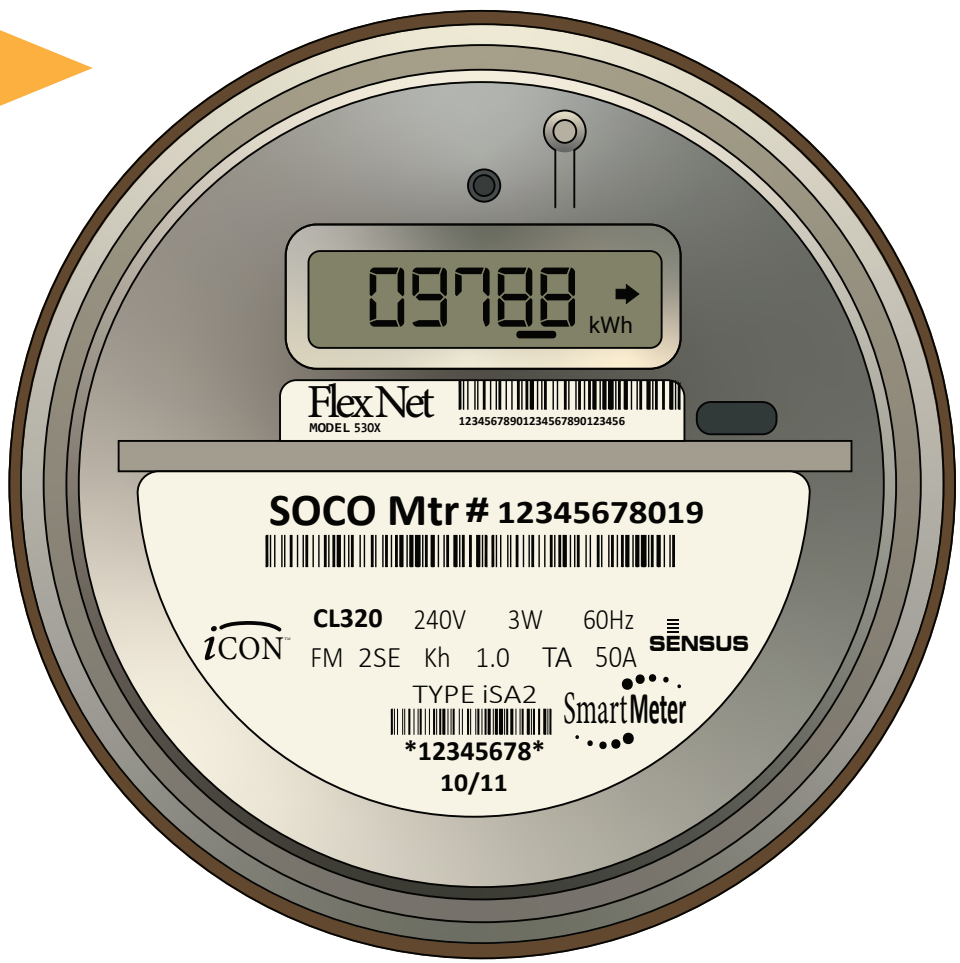
Your meter will scroll through a series of screens every few seconds. Each numerical value is preceded by a display name to tell you what each reading means.

The screen cycle includes:

- A segment test screen to ensure the display is working
- The amount of energy received from the grid
- A numerical value in kWh
- The amount of energy sent back to the grid
- A numerical value in kWh

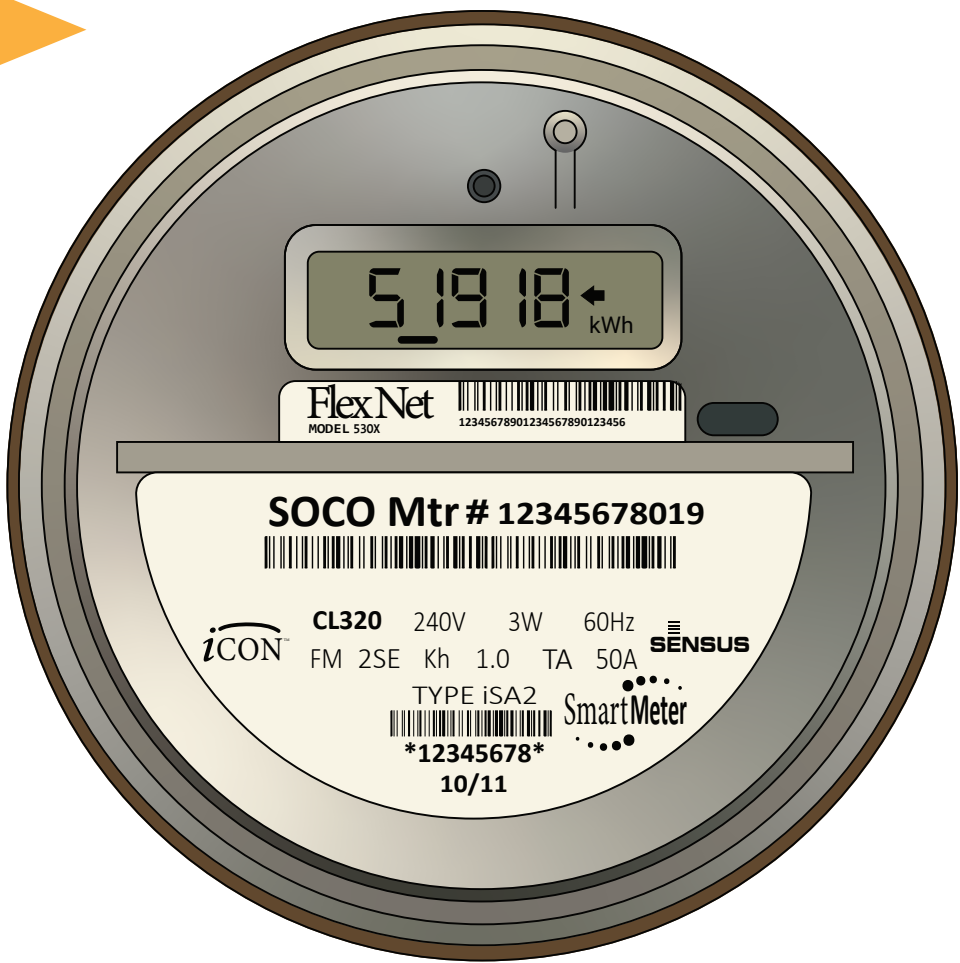
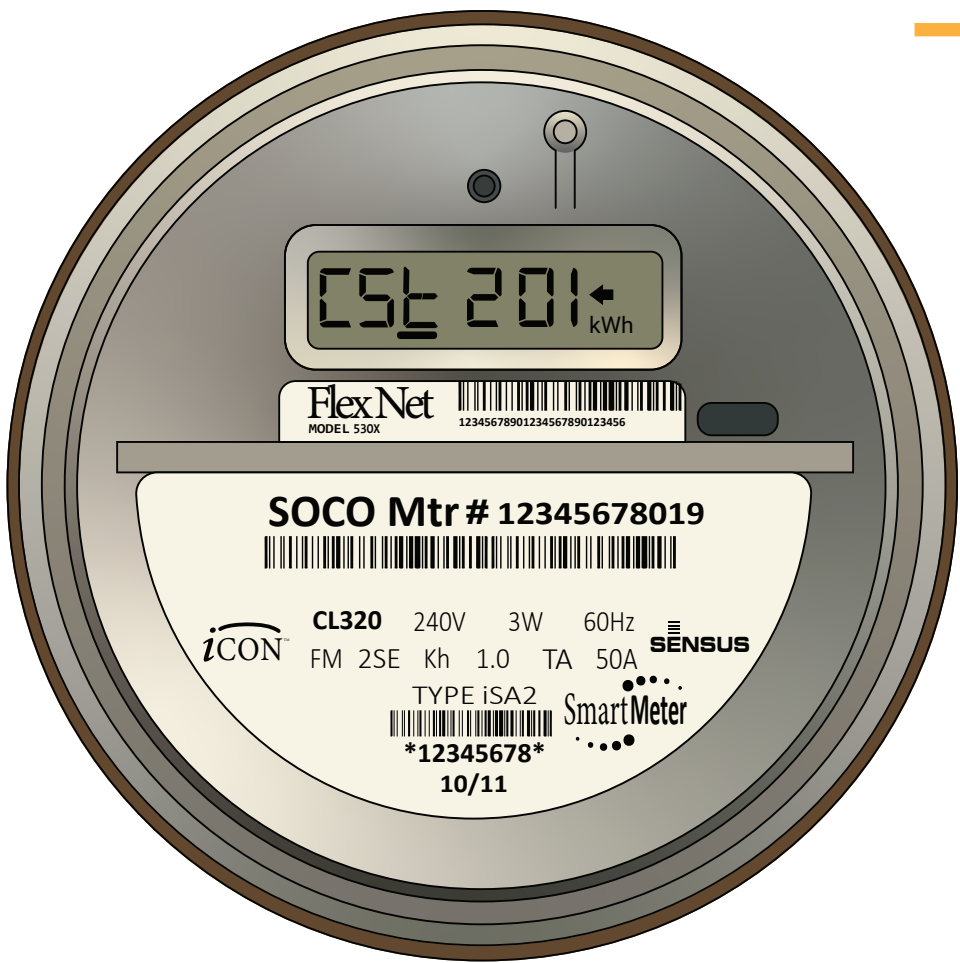
METER SCREEN CYCLE EXAMPLES

Each numerical value is preceeded by a display screen to indicate what the numerical value means.



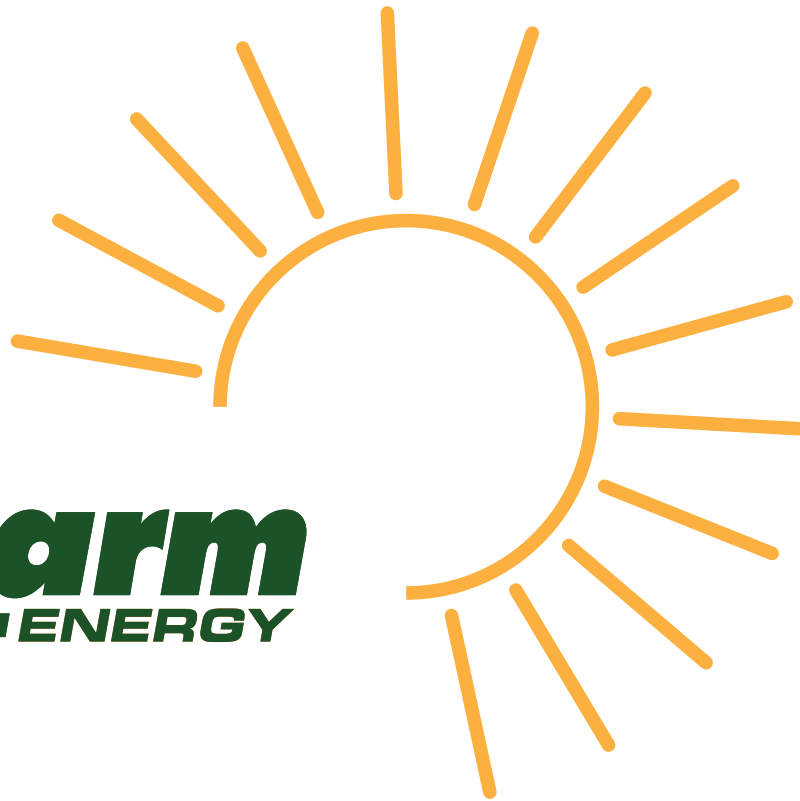
CSt 101 indicates how much energy you are receiving or purchasing from the grid.

Based on this reading, the system has received 9,788 kWh from the grid since the meter was reprogrammed.



CSt 201 indicates how much energy you are sending back or selling to the grid.

Based on this reading, the system has sent back or sold 51,918 kWh to the grid since the meter was reprogrammed.



**Do you have more questions about reading
your meter? We're happy to help!**

Just give us a call at 850.472.0341

#SFESOLARFRIDAY