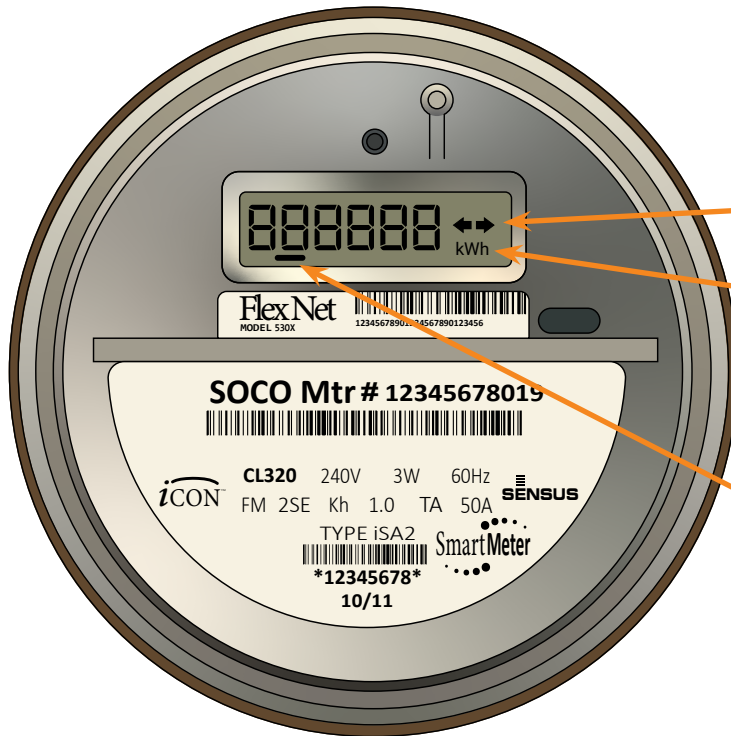


# READING YOUR METER



## METER READING BASICS

**Energy Flow Directions**

**Display Unit (kWh)**

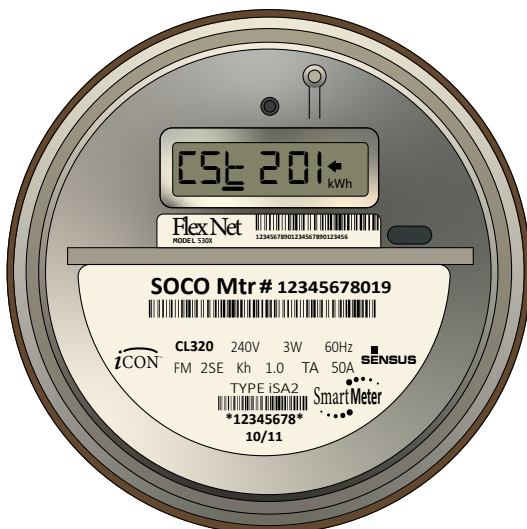
**Energy Flow Indicator**  
Direction & Rate

**Right:** Customer buying from the grid

**Left:** Customer selling to the grid

The speed of the dashes is relative to the amount of energy being delivered or produced.

Installing solar means reading your meter will look a little different. Once your solar PV system is installed, and you've been given permission to operate (PTO) from your utility company, your meter will be re-programmed.



## HOW DO I KNOW IF MY METER IS REPROGRAMMED?

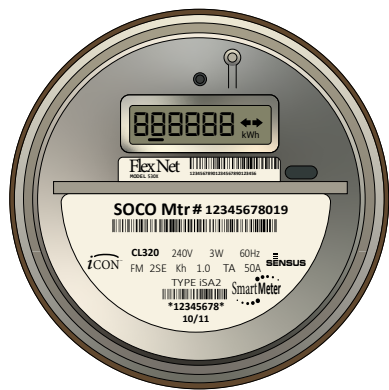
The hardest part about installing solar is waiting for your utility to give you "permission to operate" or PTO. You've got a brand new exciting system on the roof and you can't wait to use it!

The only way to know if your meter has been reprogrammed is to look for the reading "CSt 201" on your meter screen.

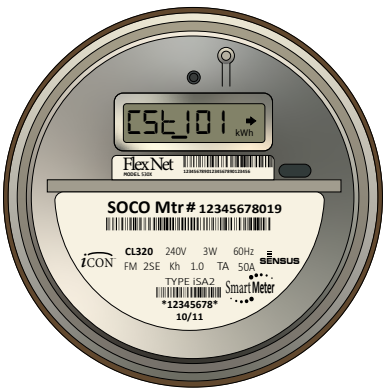
This reading means your meter has been reprogrammed for bi-directional energy flow.

WHAT DOES EACH SCREEN MEAN?

When you look at your meter you will notice that it scrolls through a series of screens every few seconds. These displays indicate the total amount of energy you are receiving from the grid, the total amount of energy you are sending back to the grid, and a segment check screen that ensures the display is working properly.



**888888 ← →**  
Segment test screen. This ensures the display works properly.



**CSt 101 →**  
Total kWh received from the grid.  
  
Right Arrow: customer is buying energy from the grid.

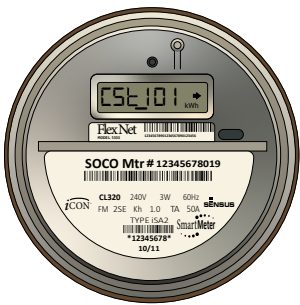


**CSt 201 ←**  
Total kWh sent back to the grid.  
  
Left Arrow: customer is selling energy to the grid.

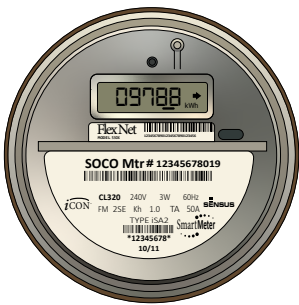
METER SCREEN CYCLE

Segment Check	All LED Segments Turned On
Cst 101	Display ID for kWh Received from Grid
XXXXXX	Total kWh - Received from Grid (right arrow)
Cst 201	Display ID for kWh Delivered to the Grid
XXXXXX	Total kWh - Delivered to the Grid (left arrow)

EXAMPLES

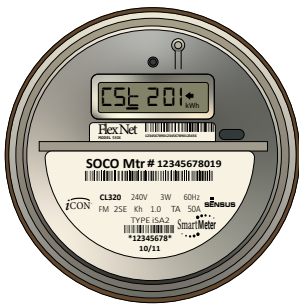


**CSt 101 →**

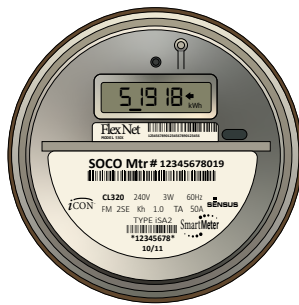


**009788 →**

This system has received 9,788 kWh from the grid.



**CSt 201 ←**



**051918 ←**

This system has sent 51,918 kWh back to the grid.